
Document Filename:			
Programme	Digitising Community Pharmacy and Medicines	Project	Real Time Exemption Checking
Document Reference			
Programme Manager	Andrew Coates	Status	Final
Owner	Aled Greenhalgh	Version	1.4
Author	Aled Greenhalgh	Version Issue Date	08/01/2020

Real Time Exemption Checking Service – Client Functional Specification

Document Management

Revision History

Version	Date	Summary of Changes
0.1	15/06/2018	Initial version for review
0.2	19/06/2018	Clarified requirements wording after BA review
0.3	27/06/2018	Amended PEC-FR-37 to allow printing tokens for exempt patients where prescribed items are Schedule 2 or 3 CDs Added requirement PEC-FR-52 to describe behaviour in claim amendment Added an item to Appendix A to be used for Universal Credit exemption Reworded PEC-FR-28, PEC-FR-39, PEC-FR-35 & PEC-FR-51 to clarify meaning. Added wording to 8.1 to clarify claim message behaviour. Filled out architecture section.
0.4	2/08/2018	Extended architecture section to include Phase 2/direct connection Amended PEC-FR-12 changing RBAC activity required to access service Amended vocabulary in Appendix A adding 'any other value' Amended PEC-FR-29 to remove part relating to persisting exemption to patient record. Amended PEC-FR-12 changing activity required. Removed PEC-FR-28, PEC-FR-45, PEC-FR-46, PEC-FR-47, PEC-FR-48 as no patient record update required
0.5	9/08/2018	Amended requirement PEC-FR-23 as prescription exemption checks cannot be requested by patient's representative.
0.6	17/08/2018	Amended Appendix A to reflect latest vocabulary changes
0.7	20/09/2018	Added PEC-FR-30 and 7.1.4 and removed PEC-FR-38 to place paper prescriptions out of scope. Added missing text under 3.2 Amended PEC-FR-36, PEC-FR-43, PEC-FR-51 and 7.2 to not allow patient override of exemption response where an exemption has been found Added PEC-FR-49 to recommend configuration of token printing for CDs Clarified wording in 8.1 Amended PEC-FR-29 to allow a check per prescription, following volumetric analysis. Removed PEC-FR-27 and added PEC-FR-49.1 to recommend configuration of token printing by default
0.8	21/11/2018	Removed PEC-FR-29 and added PEC-FR-31 ensuring checks are made per prescription. Added PEC-FR-32 preventing checks for EPS R1 Added PEC-FR-49.2 requiring showing exemption where available Added architecture diagram and description for Beta release
1.0	30/05/2019	Amendments following initial implementation:

		<p>Added PEC-FR-49.3 making exemption info available when handing to pt</p> <p>Removed PEC-FR-39 as duplicate</p> <p>Retitled to Real Time Exemption Checking Service to differentiate from an existing service already provided by NHS BSA</p> <p>7.3 amended to reflect no expiry date in response</p>
1.1	20/06/2019	Added PEC-FR-41
1.2	09/10/2019	Updated GitHub link & reviewers table
1.3	09/12/2019	Updated 'Prescriber endorsements' section and amended PEC-FR-22 wording
1.4	08/01/2020	<p>PEC-FR-50 removed from the specification.</p> <p>Prescription Charge Exemption Vocabulary table removed from the specification.</p> <p>Update Section 8.1 – Included link to NHS BSA EPS Endorsement Guidance</p> <p>RTEC EPS Values added as Annex A</p> <p>PEC-FR-7 wording updated to include (where flag is available in the system)</p> <p>Section 6 updated to clarify authenticated RBAC roles include those which inherit B0570 activity.</p> <p>All references to the electronic claim message changed to Electronic Reimbursement Endorsement Message (EREM).</p> <p>Removal of PEC-FR-32, is a duplication of PEC-FR-30</p> <p>Updated Prisoners on Release section and PEC-FR-21 to state "(when EPS is available for prisoners on release)".</p> <p>PEC-FR-45 removed from specification</p>

Reviewers

This document must be reviewed by the following people:

Reviewer name	Title / Responsibility	Date	Version
Nazia Kotia	NHS Digital Business Analyst	19/06/18	0.1
Scott Pollard	NHSBSA Project Manager	26/06/18	0.2
Neil Tait	NHSBSA Technical Architect	26/06/18	Not reviewed
Martin Hagan	NHSBSA EPS Lead	26/06/18	0.2
Andy Dickinson	NHS Digital IG Lead	26/06/18	0.2
Liam Horsfall	NHS Digital Project Manager	20/06/19	1.1
		09/10/19	1.2
		08/01/20	1.4
Andrew Coates	NHS Digital Programme Manager	17/05/19	1.0
		20/06/19	1.1
		09/10/19	1.2
		08/01/20	1.4
Richard Booth	NHS Digital Senior Technical Architect	20/06/19	1.1
		09/10/19	1.2
		08/01/20	1.4

Approved by

This document must be approved by the following people:

Name	Approval	Date	Version
Andrew Coates, NHS Digital Programme Manager	Approved	08/01/20	1.4
Richard Booth, NHS Digital Senior Technical Architect	Approved	08/01/20	1.4

Glossary of Terms

Term / Abbreviation	What it stands for
Electronic prescription	The information transmitted electronically, with the inclusion of an Advanced Electronic Signature, from a prescriber to Spine to allow dispensing and claiming via EPS
Electronic Prescription Service (EPS)	Electronic Prescription Service delivered by the EPS/ETP programme
Electronic Transmission of Prescriptions (ETP)	Electronic Transmission of Prescriptions programme, now known as the Electronic Prescription Service
EREM	Electronic Reimbursement Endorsement Message The message type previously known as “Dispense Claim Information” interaction is now termed “Electronic Reimbursement Endorsement Message” (EREM). Please note that “Dispense Claim Information” itself has not changed and in the MiM is still referred to by this name but the term by which it is known has changed / is changing in all documentation.
Prescription token	Paper copy of the electronic prescription used to capture the patient’s declaration of charge paid or exemption.
FP10	The paper form that is used to create a paper-based NHS prescription.
Medication item	Any medicine, appliance or reagent that can be prescribed
Organisation Data Service (ODS)	The Organisation Data Service (ODS) provided by the Authority. It is responsible for the national policy and standards with regard to organisation and practitioner codes.
Patient Medical Record (PMR)	A term used to describe the module/component of the system that holds patient medical records. Some implementers use the term PMR to describe a single patient medication record. Within the EPS documentation the term relates to the entire collection of patient medical records for the GP practice.
Personal administration	The prescribing, dispensing and claiming of products listed in the GMS Statement of Financial Entitlements, by a GP practice, which can be directly administered to the patient.
Prescribe	The act of authorising medication items on a prescription.
Repeat prescription	A prescriber-authorised repetition of a prescription
Repeatable prescription	A prescription valid for an authorised number of issues
The System	The system seeking compliance with the Real Time Exemption Checking Service

Document Control:

The controlled copy of this document is maintained in the Authority’s corporate network. Any copies of this document held outside of that area, in whatever format (e.g. paper, email attachment), are considered to have passed out of control and should be checked for currency and validity.

Further Requirements:

NPFIT-FNT-TO-TIN-1383 IG v3 Foundation Module

NPFIT-FNT-TO-TIN-1023 PDS Compliance Module V2 - Baseline Index

NPFIT-FNT-TO-TIN-1023 PDS Compliance Module V3 - Baseline Index

NPFIT-ELIBR-AREL-DST- 0408.04 ITK Spine Mini Services Client Requirements

NHSBSA Overprint Specification for NHS Prescriptions

NHSBSA Requirements and Guidance for Endorsement

NPFIT-ETP-EDB-0278.03 EPS Infrastructure Specification

NPFIT-FNT-TO-TIN-1383 IG v2 Foundation Module IG v3 Foundation Module

Related Guidance Documents:

NPFIT-ETP-EDB-0025 EPS Prescribing Systems Compliance Specification v6.11

NPFIT-ETP-EIM-0110 RBAC Implementation Guidance for the EPS R2

NPFIT-ETP-EIM-0015 Guidance for Endorsement

Contents

1	About this Document	8
1.1	Purpose	8
1.2	Audience	8
1.3	Content	8
2	Background	8
2.1	Architecture	9
3	Scope	9
3.1	Client Functional Scope	9
3.2	Service Functional Scope	10
4	Messaging & Integration	10
5	Patient Demographics	10
5.1	Synchronisation of Demographics Attributes	10
5.2	Demographics restrictions to Exemption Checking	11
6	Authentication & Authorization	12
6.1	Locum Staff	13
7	Real Time Exemption Checking	14
7.1	Initiating a Prescription Exemption Check	14
7.2	Handling Prescription Exemption Check Responses	16
7.3	Updating Patient Record	17
8	Prescription ‘Electronic Reimbursement Endorsement Messages’ (EREM)	17
8.1	Electronic Reimbursement Endorsement Message	17
8.2	Paper Prescriptions	18
	Annex A: RTEC EPS Value	18

1 About this Document

1.1 Purpose

This document details the functional requirements that must be fulfilled in order for client systems to integrate with the Real Time Exemption Checking Service.

Some aspects of the business processes and implementation will require agreement with the relevant professional and/or representative bodies, and local implementation detail may vary between organisations, in particular identifying those processes which are optional and mandatory. The system will be expected to support the documented business process whether they are optional or mandatory.

This document specifies the functionality required to integrate with the Real Time Exemption Checking Service for dispensing in England.

Dispensing systems must be compliant with the Electronic Prescription Service and so must additionally adhere to the requirements defined within the “Dispensing Systems Compliance Specification” (ref: NPFIT-ETP-EDB-0024).

1.2 Audience

This document has been written for implementers.

1.3 Content

Within this document, system requirements are explicitly numbered and listed within tables. Additional documentation, guidance and illustrations are contained within each document section to support the understanding of the requirements.

The key words "MUST", "MUST NOT", "REQUIRED", "SHALL", "SHALL NOT", "SHOULD", "SHOULD NOT", "RECOMMENDED", "MAY", and "OPTIONAL" in this document are to be interpreted as described in RFC 2119.

2 Background

NHS Prescription Fraud is currently costing the NHS over £200 million a year. Patients are not clear what exemptions they are entitled to and how to obtain the required proof. The current paper system is open to error as although checks are carried out at the dispensary the information available at this point may be limited. Checks are also carried out by the NHSBSA but this is only once medication has been dispensed.

NHS Digital has been asked to provide an effective digital solution to ensure that exemptions from prescription charges are applied correctly at the point of dispensing medication.

The service will enable dispensers to check a Patients' prescription exemption status, resulting in exemptions being applied correctly prior to medication being dispensed, thereby reducing prescription fraud in England.

There are numerous benefits associated with this change, including dispensers benefiting from efficient exemption status checking due to the digitising of the process, which will in turn reduce the burden on pharmacy. Any integration with the Real Time

Exemption Checking Service must not increase pharmacy activity nor hinder any patient from receiving their medication.

2.1 Architecture

The architecture is based on the NHSBSA operationalising an existing service used for checking existing exemptions for patients wishing to purchase a Prescription Prepayment Certificate online.

The service maintains the existing dispensing system interfaces with the Spine EPS application (Spine Security Broker, EPS EREM messaging) and provides a simple Application Programming Interface (API) gateway from NHSBSA cloud-based infrastructure.

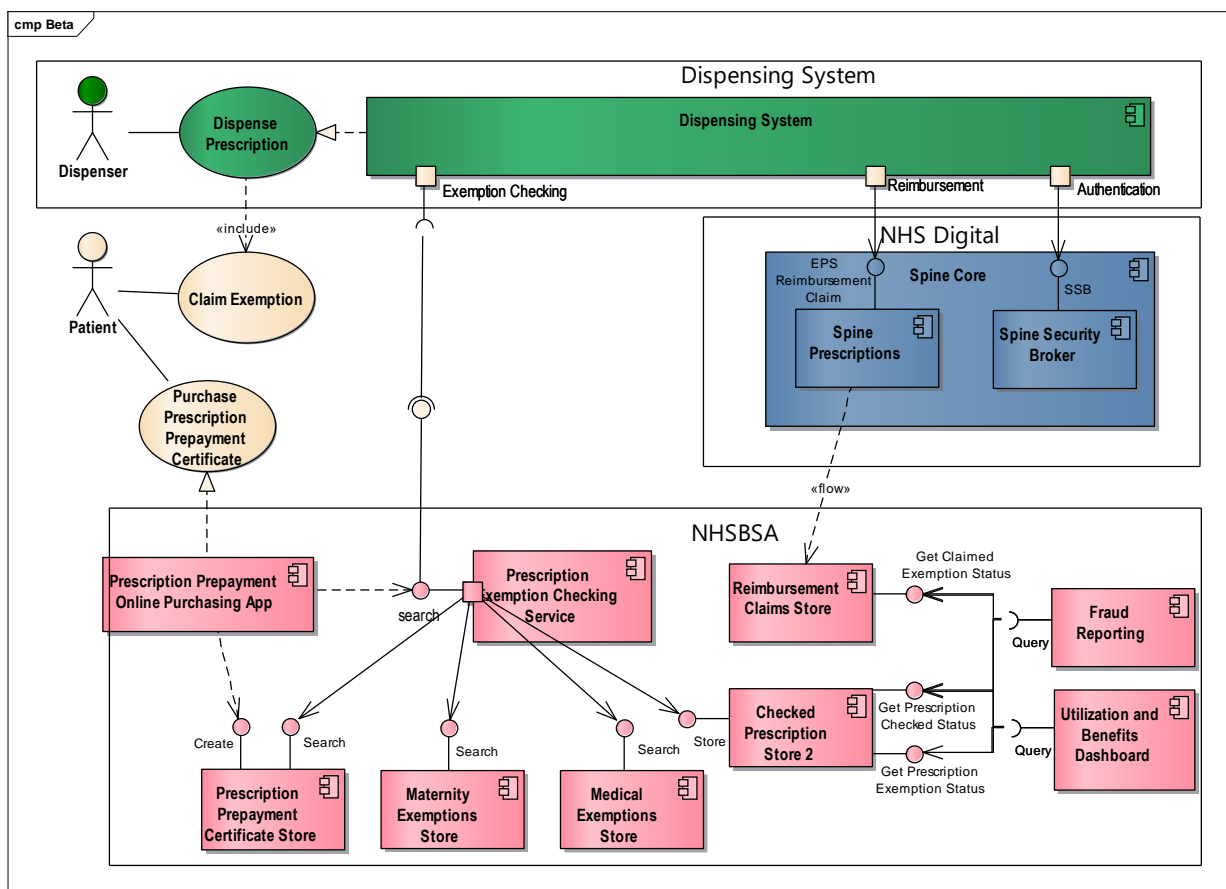


Figure 1: Real Time Exemption Checking Service components

3 Scope

3.1 Client Functional Scope

The following are explicitly **out of scope** for the Real Time Exemption Checking Service:

- Bulk prescriptions
- Prescription charge refund

- Dispensing outside of England
- Dispensing of non-English prescriptions in England
- FP 10 REC
- Home Oxygen Therapy Service
- FP10, EPS Release 1 and any other prescriptions which do not send an Electronic Reimbursement Endorsement Message (EREM).

3.2 Service Functional Scope

There are a number of ways by which patients can be exempt from exemption charges, and this may be updated as policy changes. Not all of these exemption types are available through the exemption checking service, and the exemption types may be extended as new information sources are connected. The interface has been designed to support introduction of new exemption types without a need to make changes to the externally facing elements.

4 Messaging & Integration

The service is provided as a simple web service. The integration requirements are documented at: <https://nhsconnect.github.io/prescription-exemptions/>

Ref	Requirement
PEC-FR-1	Systems must meet the Real Time Exemption Checking Service integration specification.

5 Patient Demographics

The Real Time Exemption Checking Service is available to any patient with a known and valid NHS Number obtained from Spine Demographics and whose record is not flagged within Spine Demographics with a confidentiality code of “sensitive” or flagged as deceased.

5.1 Synchronisation of Demographics Attributes

For integration with the Real Time Exemption Checking Service, a minimum set of patient demographic attributes must be synchronised between the local system and Spine Demographics. These attributes are as follows:

- NHS Number
- Usual name
- Usual address
- Date of birth
- Gender

Telecom contact details, which includes email, are deliberately excluded as they have been found to be frequently updated and inconsistently formatted, resulting in unnecessary synchronisation overhead.

5.2 Demographics restrictions to Exemption Checking

The following scenarios are not permitted to use the Real Time Exemption Checking Service

5.2.1 Invalid Values in Demographics Data

Data retrieved from Spine demographics and local systems may not meet data format requirements and must not be permitted to be included in requests to the service. Common examples include non-ASCII characters.

5.2.2 Exemptions for Dead Patients

The System must prevent the checking of exemptions for dead patients. The System must prevent this based upon the data from Spine Demographics or locally held information: The 'deceasedTime' attribute within the patient's Spine Demographics record holds details of time of death. This requirement applies to both the death status flags within Spine Demographics of 'formally' and 'informally' dead. Please refer to the Spine Demographics specification for definitions and business processes for patients becoming marked as dead.

An internal trigger from Spine Demographics informs the Spine Prescriptions system that a patient has died, cancelling all outstanding prescriptions for that patient on Spine which are yet to be downloaded by the dispensing system, and marking others as pending cancellation.

5.2.3 Exemptions for 'Sensitive' Patients

A demographic record that is sensitive will be identified on PDS with a 'confidentialityCode' attribute of "S". EPS prescriptions are not generated for patients with records flagged as sensitive. This means that checks for these prescriptions should not take place, but also that dispensing systems do not generally include capture of the sensitive flag. Where the sensitive flag is available in the dispensing system, the System must ensure that an electronic prescription cannot be authorised for these patients.

Ref	Requirement
PEC-FR-2	<p>The system must implement Spine demographics synchronisation as described either in:</p> <p>“PDS Compliance Module V3 - Baseline Index” (ref: NPFIT-FNT-TO-TIN-1188)</p> <p>OR</p> <p>ITK PDS Spine Mini Service bundle as described in the document ITK Spine Mini Services Client Requirements (NPFIT-ELIBR-AREL-DST-0408.04)</p> <p>OR</p> <p>“PDS Compliance Module V2 - Baseline Index” (ref: NPFIT-FNT-TO-TIN-1188)</p>
PEC-FR-3	<p>The System <u>must</u> synchronise at least the following patient attributes from Spine Demographics with the local demographic record.</p> <ul style="list-style-type: none"> • Usual name • Usual address • Date of birth • Gender
PEC-FR-4	<p>The System <u>must not</u> automatically synchronise patient telecom details with Spine demographics, including ‘use’ attributes.</p>
PEC-FR-5	<p>The system must only allow prescription exemption checks to take place for patients with demographic records synchronised with Spine demographics.</p>
PEC-FR-6	<p>The System must prevent a prescription exemption check for a patient who is recorded as deceased.</p>
PEC-FR-7	<p>The System must prevent a prescription exemption check for a patient whose demographic record is flagged as sensitive (where the flag is available in the system).</p>
PEC-FR-8	<p>The System must prevent incorrectly formatted data from being submitted within a prescription exemption check.</p>

6 Authentication & Authorization

All calls to the must be made by a user authenticated and authorized by Spine, as described by NHS Digital Information Governance requirements and Spine External Integration Specification Part 6. Clients must implement Role Based Access Control

(RBAC) as defined in the National RBAC Database (NRD), and in order to map the correct activities to roles implementation must include at least the pharmacy-related roles. At version 27.2 of the NRD the following baseline roles are included in the EPS Pharmacy restriction set:

EPS Pharmacy	R8008	Admin/Clinical Support Access Role
EPS Pharmacy	R8004	Healthcare Student Access Role
EPS Pharmacy	R8003	Health Professional Access Role
EPS Pharmacy	R1290	Pharmacist

The system must only authorize users with RBAC activity B0570 – *Perform Pharmacy activities* and those which inherit B0570 activity to carry out prescription exemption checks.

6.1 Locum Staff

Some users, particularly locum pharmacists may work in many organisations at short notice. Rather than being registered with a User Role Profile (URP) per employing organisation these users can be registered with a single URP associated with a virtual 'National Locum Pharmacy' organisation ODS code (code = FFFFF). When including organisation details in the request this must be the detail of the requesting organisation rather than from the URP.

Ref	Requirement
PEC-FR-10	The system must implement Spine authentication and Roles-Based Access Control (RBAC) as defined in NHS Digital Information Governance requirements.
PEC-FR-11	The System must implement the Baseline Roles defined in the EPS Pharmacy restriction set of the National RBAC Database.
PEC-FR-12	The System must authorize only authenticated users with the RBAC activity <i>B0570 - Perform Pharmacy Activities</i> to carry out prescription exemption checks .
PEC-FR-13	The System must only allow users to carry out prescription exemption checks within a current authenticated session.
PEC-FR-14	The System must include the organisation detail of the requesting organisation in authentication headers submitted to the Real Time Exemption Checking Service.

7 Real Time Exemption Checking

The Real Time Exemption Checking Service provides point in time information and so can only be used at the point of dispensing when the patient or patient's representative is asked to pay. Accordingly, it is not appropriate for use to check historical exemptions as required in the case of prescription charge refunds.

7.1 Initiating a Prescription Exemption Check

The trigger for an exemption check must be based on dispensing activity, which may include creation of a new patient record or at the request of the patient; the system must not poll the Service or call the Service on expiry of an existing exemption.

A prescription exemption check is only valid for a single prescription, and so if the patient has several prescriptions to dispense then a separate prescription exemption check should be made for each.

7.1.1 Age-Related Exemptions

Age-related exemptions (those children aged under 16 or people aged 60 and over) are out of scope for the Real Time Exemption Checking Service and a prescription exemption check must not be made for these patients. As per the drug tariff, patients whose date of birth is automatically printed out on a hard copy paper prescription or included in an EPS prescription do not need to complete an exemption declaration. Patients with an EPS prescription which does not include date of birth or with hand written prescription forms where the date of birth is inserted manually must continue to make an exemption declaration.

7.1.2 Prisoners on Release

Released prisoners and those released from secure accommodation do not have to pay a prescription charge and a prescription exemption check must not be made for these patients. As per the drug tariff these patients are identified by 'HMP', and the prison or secure accommodation address and telephone number printed in the box provided for the practice address on the front of the form, with the prescribing code and the cost center code for the organisation. These patients do not have to sign the exemption declaration.

Electronic prescriptions are not currently prescribed for prisoners on release. Any future work to implement EPS for prisoners on release will be picked up as part of EPS live service. When EPS is live in this scenario, dispensing system suppliers will be required to carry out the relevant change to ensure a prescription exemption check is prevented for prisoners on release.

7.1.3 Prescriber-managed exemptions

If a prescription **only** contains items where fee exemption is indicated by the following prescriber endorsements, they are out of scope for the Real Time Exemption Checking service:

- Contraceptive - CC/ ♀
- Sexual health treatment – FS

If the prescription contains endorsed items and other non-endorsed items, an RTEC check must be carried out in this scenario.

7.1.4 Paper Prescriptions

Where prescriptions do not send an Electronic Reimbursement Endorsement Message (as in EPS Release 2) there is no means to indicate to the reimbursement authority that a patient's declared exemption has been confirmed through the service. Exemption checks for paper prescriptions such as FP10 and EPS Release 1 prescriptions and other forms which may need reimbursement such as FP10 REC and NUMSAS (NHS Urgent Medication Supply Advanced Service) therefore must not use the service. Future EPS development may provide electronic reimbursement endorsement messaging for other prescription types such as FP10 MDA; these would therefore be in scope of the Real Time Exemption Checking Service.

Ref	Requirement
PEC-FR-20	The system must not carry out a prescription exemption check where the patient is a child aged under 16 or is aged 60 and over.
PEC-FR-21	The system must not carry out a prescription exemption check in the case that the patient is a prisoner on release (when EPS is available for prisoners on release).
PEC-FR-22	The system must not carry out a prescription exemption check in the case of prescriptions wholly exempt from charges due to prescriber endorsements.
PEC-FR-23	The System must carry out a prescription exemption check based only on either dispensing activity or the request of the patient.
PEC-FR-24	The system must be able to carry out a prescription exemption check automatically as part of the dispensing workflow at the point of dispensing.
PEC-FR-25	The system must allow automatic prescription exemption checks as part of the dispensing workflow to be configurable as toggled on or off.
PEC-FR-26	The system must allow the user to manually initiate a prescription exemption check.
PEC-FR-27	The system must make the source of patient exemption information clear in the user interface.
PEC-FR-30	The system must not carry out a prescription exemption check for prescriptions which cannot send an Electronic Reimbursement Endorsement Message (EREM).

PEC-FR-31	The system must not apply a prescription exemption check response to more than one prescription.
-----------	--

7.2 Handling Prescription Exemption Check Responses

Where a prescription exemption is successfully returned by the service this must be applied by default to the prescription. Systems must not allow patients to override the prescription exemption service response and select a different or no exemption.

Where an exemption is found the prescription exemption check response may indicate just that an exemption exists or may include the detail of the patient's exemption type. If the exemption type detail is included then this must be shown to the user.

Where a prescription exemption is successfully returned by the service systems should not print dispensing tokens for EPS Release 2 prescriptions by default. Some dispensing workflows include capture of a signature from collectors of Schedule 2 or 3 Controlled Drugs a token may be necessary in these cases, and so printing of tokens by default for these prescriptions should be configurable.

Where no exemption is found the system must indicate that the service has been unable to find an exemption but that an exemption may still exist and the dispenser must defer to the normal exemption checking process.

7.2.1 Failed Calls to Real Time Exemption Checking Service

The prescription exemption service is built to offer a high degree of availability but as it does not provide clinical data, and failure will not have clinical impact or prevent the patient from receiving prescribed items it is not necessarily hosted to the same standard as, for example, the Spine EPS components. Systems must gracefully handle failed prescription exemption checks in a way that 'fails fast' and does not delay the user or disrupt dispensary workflow. The paper exemption declaration and any pre-existing exemption evidence must continue to be available.

7.2.2 Audit Logging

A system audit log recording and monitoring which users performed which action on which resources is required to meet information governance requirements. Prescription exemption checks are to be included in this log.

Ref	Requirement
PEC-FR-35	Systems must apply prescription exemptions returned by an exemption check to prescriptions by default.
PEC-FR-36	Systems must not allow the user to override the prescription exemption check response where an exemption has been found by the exemption checking service.
PEC-FR-40	Systems must not indicate to the user that no exemption <i>exists</i> where a prescription exemption check shows no exemption is <i>found</i>

PEC-FR-41	Systems must inform the user of the need to obtain an exemption declaration including signature where a prescription exemption check shows no exemption is found.
PEC-FR-42	Systems must inform the user of the need to obtain an exemption declaration including signature where a call to the service fails.
PEC-FR-43	Systems must inform the user that they need not obtain evidence or an exemption declaration where a prescription exemption check has shown an exemption applies.
PEC-FR-44	Systems must include prescription exemption checks in scope of the system audit log.
PEC-FR-49	Systems should allow printing of tokens for Schedule 2 & 3 Controlled Drugs to be configurable as toggled on or off.
PEC-FR-49.1	Systems should allow printing of tokens by default for prescriptions where an exemption has been confirmed to be configurable as toggled on or off.
PEC-FR-49.2	Systems must inform the user of the specific exemption type where this is provided in a prescription exemption check response.
PEC-FR-49.3	Systems should make information on whether they need to obtain an exemption declaration available to users when handing prescriptions to patients such as by showing on token overprint, bag labels, delivery tablets or Point of Sale system.

7.3 Updating Patient Record

As no expiry date is returned by the Real Time Exemption Checking Service the exemption information returned must not be applied to other prescriptions or permanently update the patient record although it must be stored to apply to the prescription Electronic Reimbursement Endorsement Message (EREM).

8 Prescription ‘Electronic Reimbursement Endorsement Messages’ (EREM)

Prescription exemption information retrieved from the Real Time Exemption Checking Service must be distinguished from exemption information retrieved from the patient in the EREM to the Pricing Authority in order to focus counter-fraud effort.

8.1 Electronic Reimbursement Endorsement Message

The existing EPS EREM is to be used when submitting reimbursement endorsement messages with exemptions confirmed by the Real Time Exemption Checking service. In order to differentiate patient exemptions confirmed by the service, additional EPS

values must be used for indicating patient prescription charge exemption. Information on the values used within the Real Time Exemption Checking service can be found in Annex A. Where the patient wishes to claim a different exemption not confirmed by the service, suppliers should utilise existing exemption values as part of the EPS process. Information on these values can be found within the NHSBSA 'Requirements and Guidance for Endorsement in EPS' here:

<https://www.nhsbsa.nhs.uk/pharmacies-gp-practices-and-appliance-contractors/prescribing-and-dispensing/endorsement-guidance>

Prescription exemptions must be current at the point where the patient is asked to pay for the prescription. A prescription exemption check only reflects the patient's exemption at the point in time at which it is carried out. EREMs, including EREM amendments which include the exemption type, and are likely to be sent some time after the prescription is dispensed to the patient. This means that the exemption for a prescription will need to be stored locally for the period between dispensing and submitting the EREM rather than running an exemption check at the point of submitting the EREM; similarly, if the EREM is later amended the same exemption type / response must be included.

8.2 Paper Prescriptions

EPS R1 and paper FP10 prescriptions are reimbursed by submission of the prescription form, so there is no opportunity to indicate where a prescription exemption has been confirmed by the Real Time Exemption Checking Service.

Ref	Requirement
PEC-FR-51	Systems must use any value returned in a prescription exemption check as the Charge Exempt value in the Electronic Reimbursement Endorsement Message (EREM) for EPS R2 prescriptions.
PEC-FR-52	Systems must not carry out a prescription check when amending Electronic Reimbursement Endorsement Messages (EREM) for EPS prescriptions unless the amendment is being made at the point of dispensing.

Annex A: RTEC EPS Value

The below table outlines the EPS values for the RTEC service.

Any '9' value received by NHSBSA in an	Patient does not need to pay the prescription charge - confirmed by RTEC source	This allows the exemption status to be confirmed and
--	---	--

RTEC 'Confirmed' response (e.g. 9999) *Excluding 9005		included in the Electronic Reimbursement Endorsement Message (EREM) without informing the dispenser of the specific exemption type.
9005	has a valid maternity exemption certificate - confirmed by RTEC source	This is a future proof requirement to ensure systems can display the exemption type if this was provided by the NHSBSA in the RTEC response.